

This manual will show you how to use your Hyundai Photonics Digital Strobe XB-PRIME correctly.
Please follow the instructions carefully.

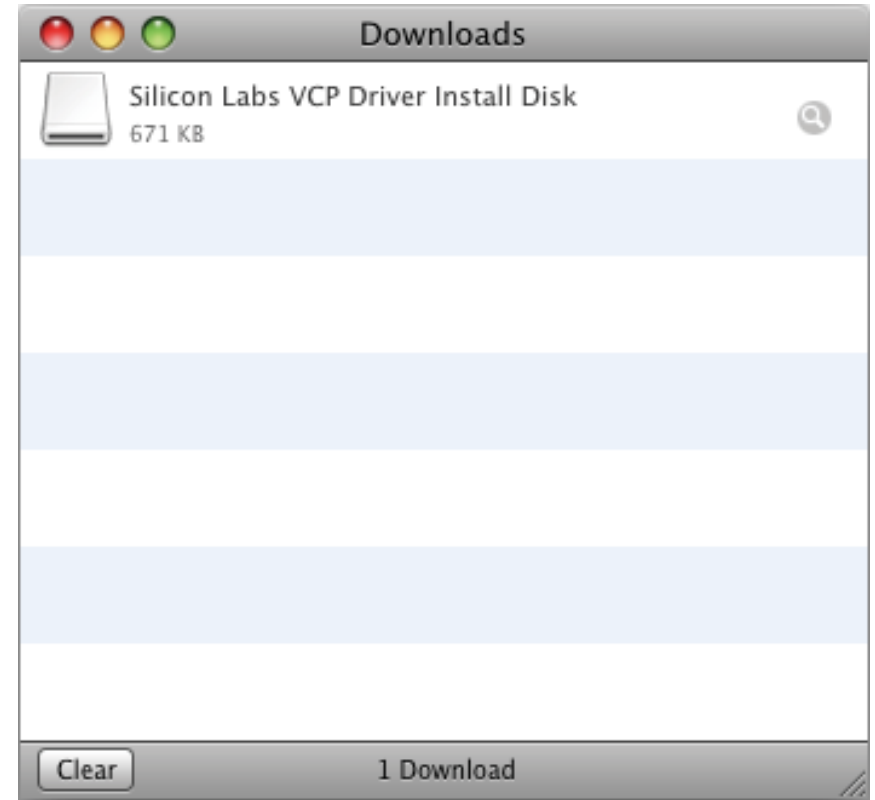
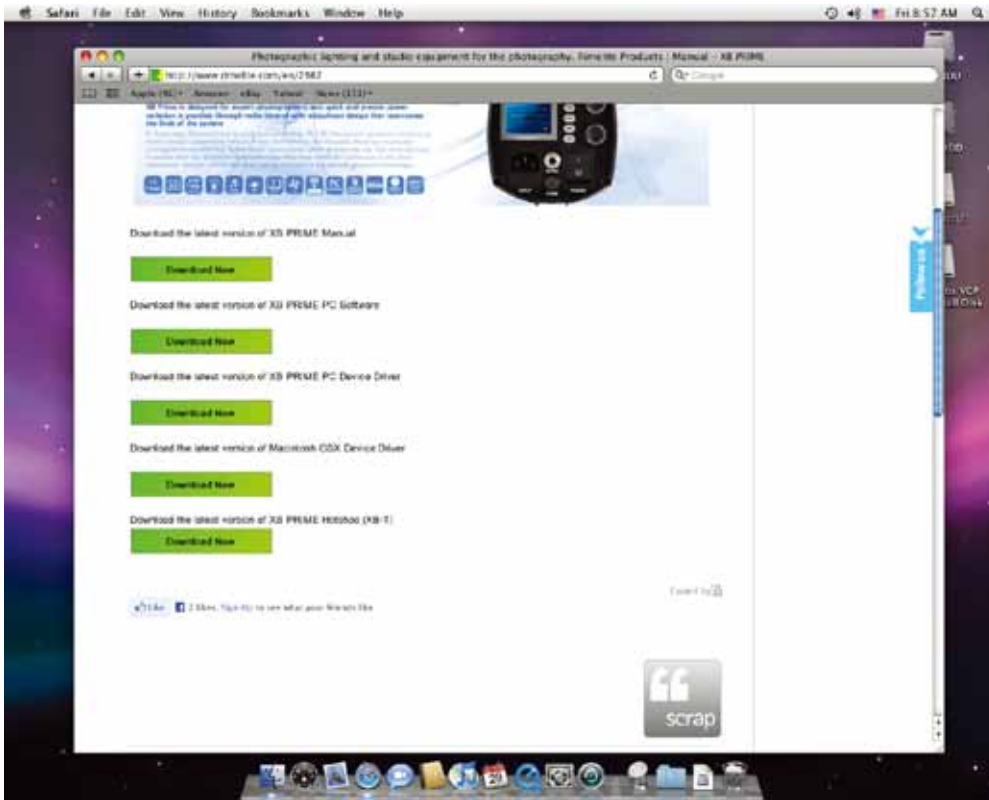


RiME LITE®

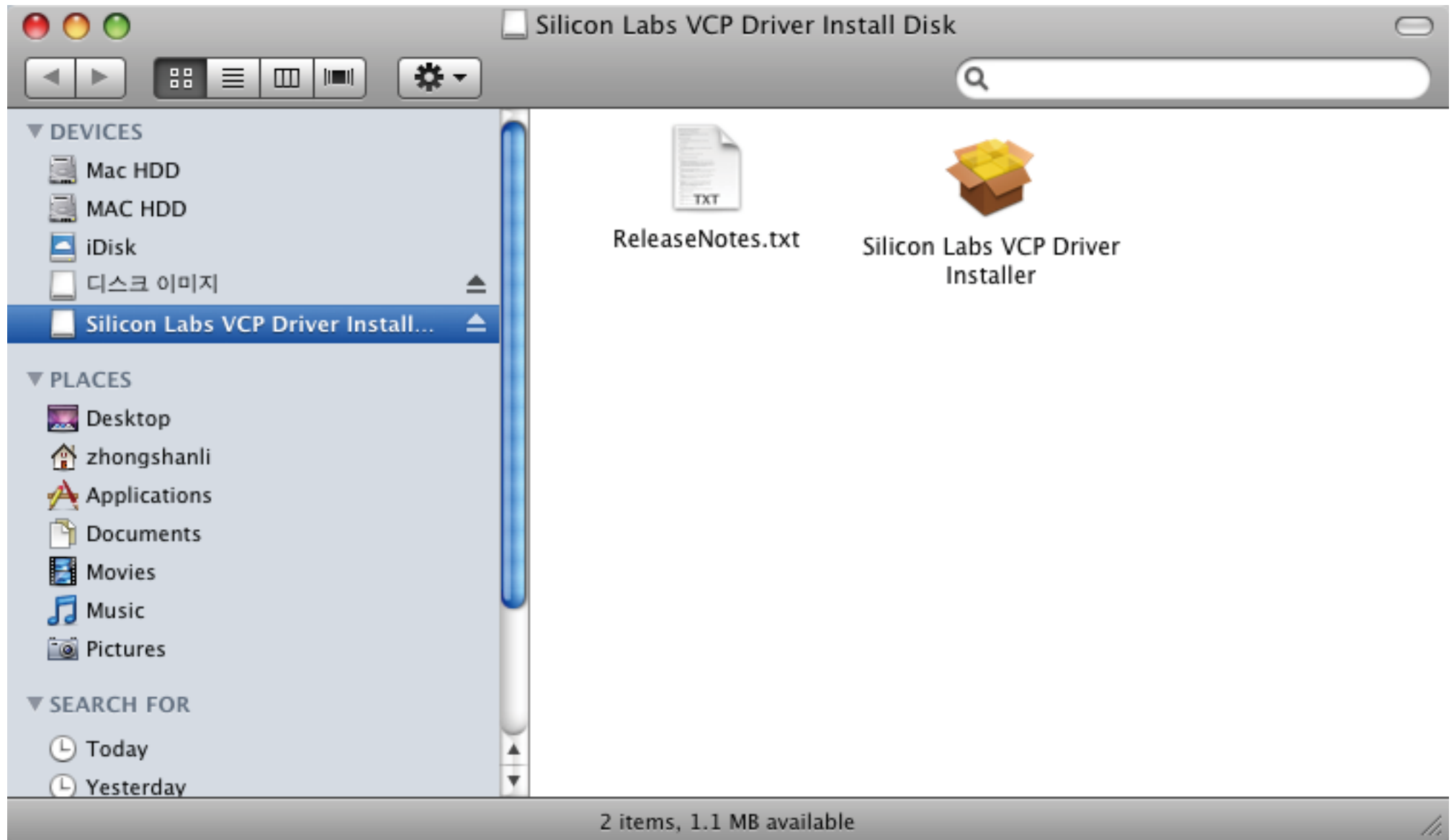
SOFTBOXES • FLASHES • ACCESSORIES

www.rimelite.com

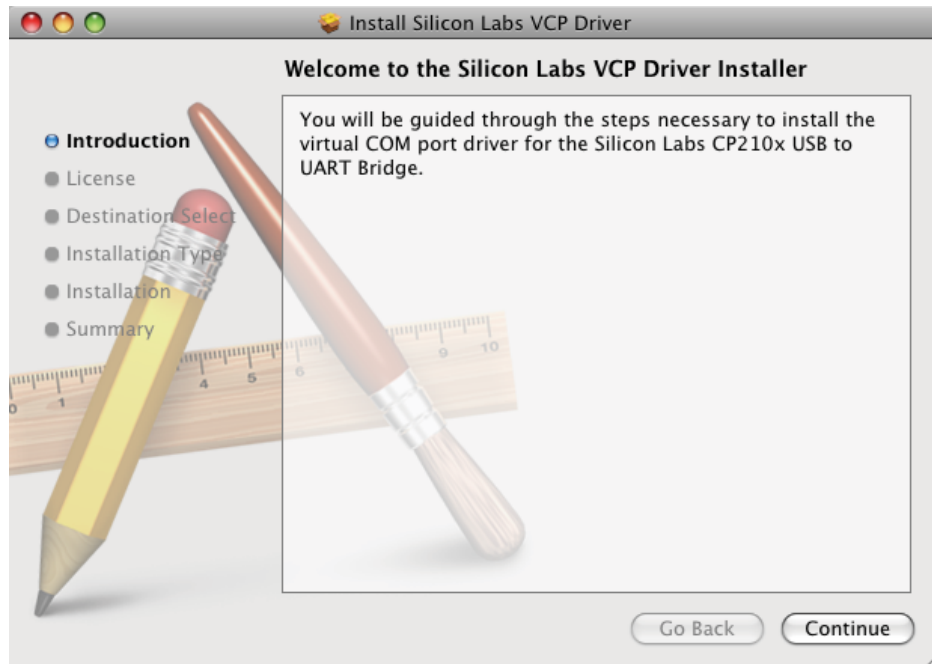
1. To download software, check the following web-page
(HOME < SUPPORT < MANUAL / <http://www.rimelite.com/en/manual>)



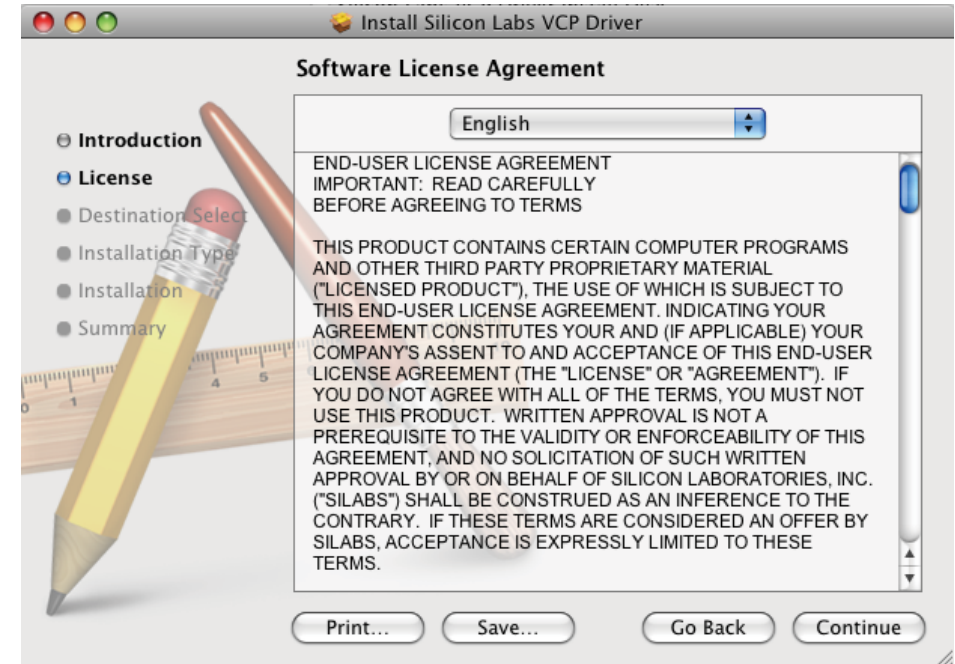
2. Install and run Silicon Labs VCP Driver Installer



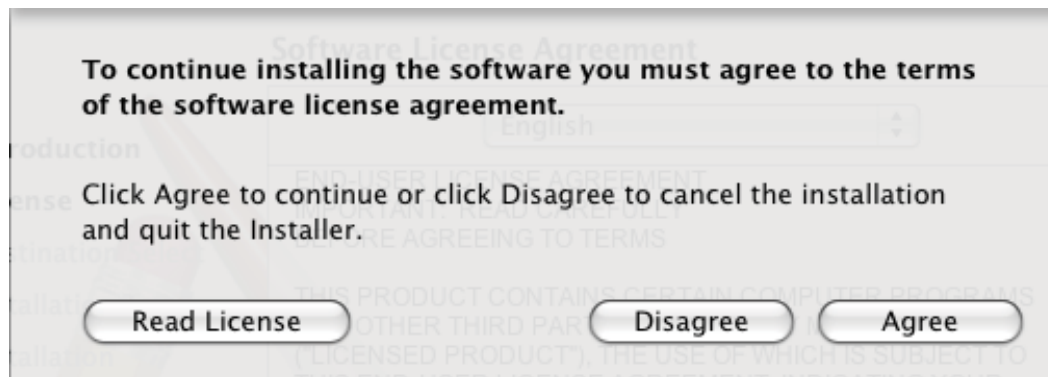
3. Click Continue button on Introduction screen



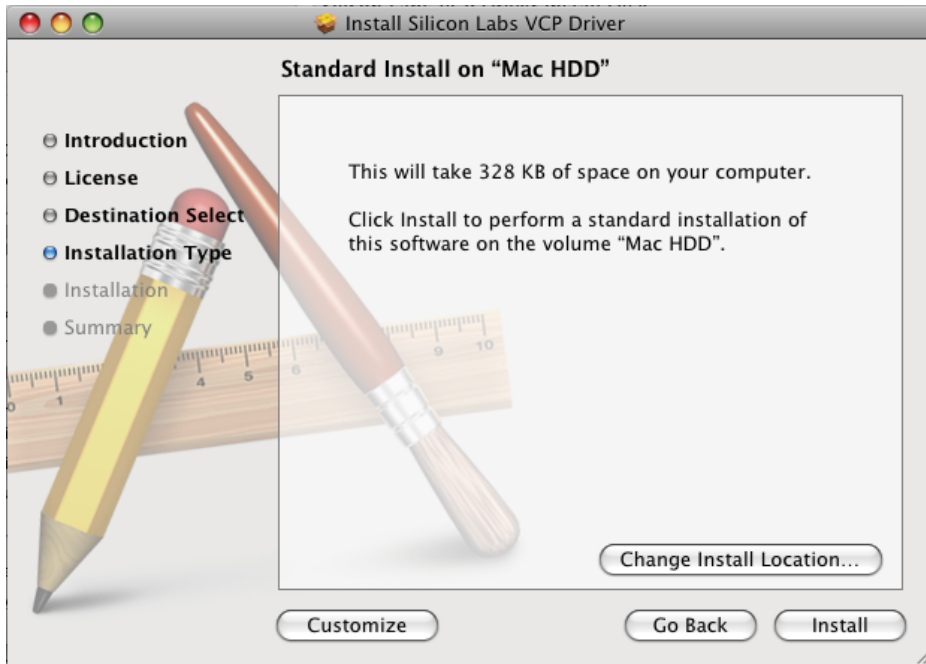
4. Check software license, then click CONTINUE button.



5. click "Agree" button



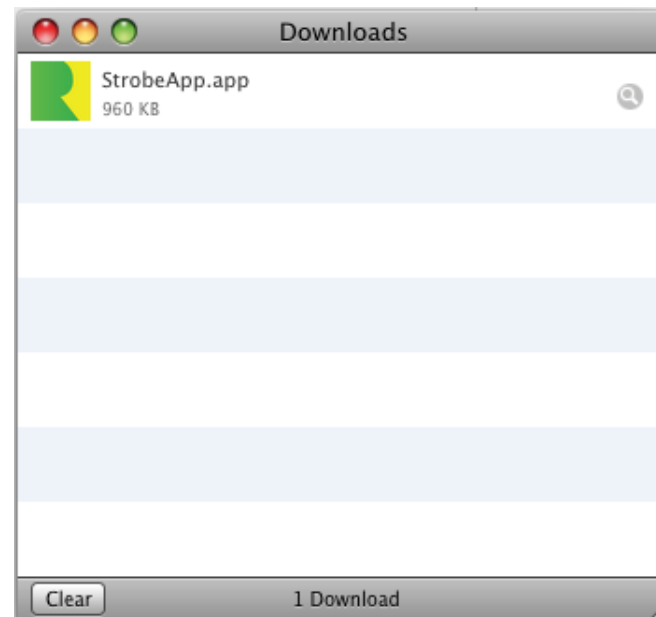
6. Choose HDD, then click INSTALL



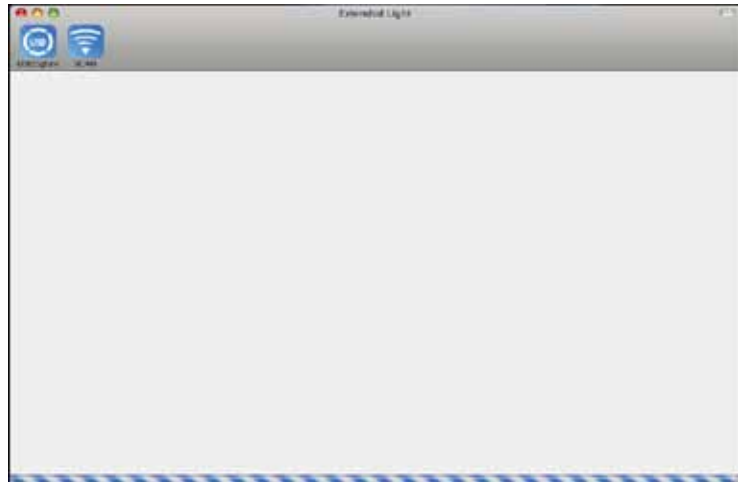
7. Input name and password, then install Silicon Labs VCP Driver Installer



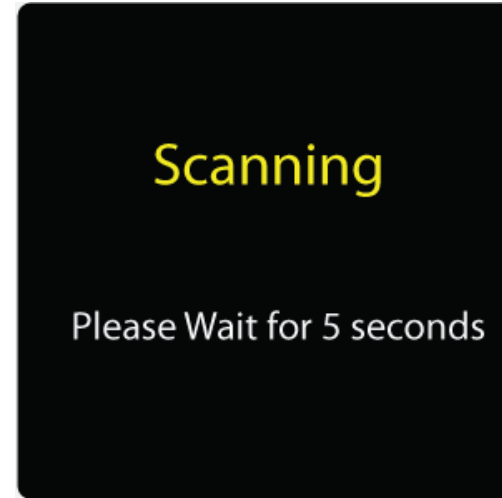
8. Download and run the software



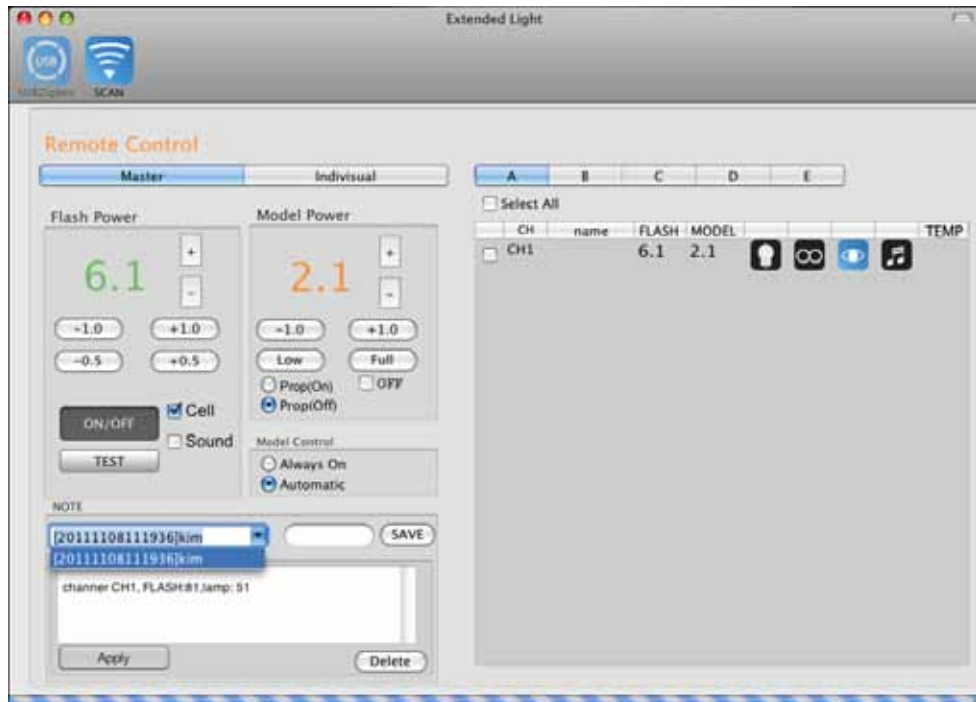
1. After you run the software, click USBZigbee.
XB PRIME and MAC is connected by this icon button.



2. Click SCAN button.
It will search XB PRIME in operation.



3. After searching XB PRIME in operation, it shows the screen that allows you to control XB PRIME.



The meaning of each function

The screenshot shows the 'Extended Light' software interface with the following components and annotations:

- Flash Output (+ : Up, - : Down)**: Points to the '+' and '-' buttons for the Flash Power control.
- Status of Modeling lamp**: Points to the 'Model Power' control area.
- Modeling lamp Output (+ : Up, - : Down)**: Points to the '+' and '-' buttons for the Model Power control.
- Group Setting (A, B, C, D, E)**: Points to the group selection tabs at the top right.
- Controlling each flash separately (Master)**: Points to the 'Master' tab in the Remote Control section.
- Controlling each flash at once (Individual)**: Points to the 'Individual' tab in the Remote Control section.
- Status of flash setting**: Points to the '6.1' value in the Flash Power control.
- Controlling Status of flash setting**: Points to the '-1.0', '+1.0', '-0.5', and '+0.5' buttons in the Flash Power control.
- Sleep mode On / Off**: Points to the 'ON/OFF' button in the Flash Power control.
- Fire the flash**: Points to the 'TEST' button in the Flash Power control.
- Status of the saved files**: Points to the 'NOTE' section at the bottom.
- SAVE File Apply**: Points to the 'Apply' button in the NOTE section.
- CELL On / Off**: Points to the 'Cell' checkbox in the Flash Power control.
- SOUND On / Off**: Points to the 'Sound' checkbox in the Flash Power control.
- Prop(On) : concurrent control of the Flash and Modeling light**: Points to the 'Prop(On)' radio button in the Model Power control.
- Prop(Off) : Individual control of the Flash and Modeling light**: Points to the 'Prop(Off)' radio button in the Model Power control.
- OFF : Modeling light OFF**: Points to the 'OFF' checkbox in the Model Power control.
- Full : Full output of Modeling light**: Points to the 'Full' button in the Model Power control.
- Always On : Modeling lamp keep turning on all the time during flashing**: Points to the 'Always On' radio button in the Model Control section.
- Automatic : Off the Modeling lamp shortly during flashing**: Points to the 'Automatic' radio button in the Model Control section.
- Over-heating**: Points to the 'TEMP' column in the table.
- Status of the strobe functions**: Points to the strobe function icons in the table.
- Status of Modeling lamp**: Points to the light bulb icon in the table.
- Status of Flash**: Points to the 'FLASH' column in the table.
- Current channel**: Points to the 'CH' column in the table.
- Tick off ("V") the flashes that you want to control together**: Points to the checkbox in the table.
- Saving current setting**: Points to the 'SAVE' button in the NOTE section.
- Delete saved set file**: Points to the 'Delete' button in the NOTE section.
- Name the file for storing**: Points to the 'Here' text field in the NOTE section.

CH	name	FLASH	MODEL	TEMP
<input type="checkbox"/>	CH1	6.1	2.1	Light bulb icon, Strobe icon, Eye icon, Music icon