

USER GUIDE

UNION 2 / 4 / 6



CE / CSA / ISO 9001 / ISO 14001 / RoHS



Please read this manual before operating UNION, and keep it for future reference.

SOFTBOXES • FLASHES • ACCESSORIES

www.rimelite.com

Index

Introduction	P03
Intellectual Property	P03
Safety Introduction	P04
Unpacking	P05
Layout	P06
Specification	P07
Operation Instruction for UNION	P08
Operation Instruction for SWING	P09
Check list when troubling	P10
Replacing lamp and flash tube	P11
Accessories	P13
Warranty	P14



- INTRODUCTION

Thank you for your choice for **UNION**.

UNION is designed for all photographers. It gives quicker and easier operation and great satisfaction for professional photographers. **UNION** is made of superior electric components in the world. (Capacitor : Rubicon Company [only made in Japan], Flash Tube : Perkin Elmer Company [Only made in Singapore])

- Rime Lite telecommunications

Web: www.rimelite.com

Facebook: rimelites

Twitter: @rimelites

Mail : info@rimelite.com

Headquarters: Hyundai Photonics B/D, 118-16, Chimsan-Dong, Buk-Gu, Daegu, South Korea.

Tel: 82-53-359-1445 / Fax: 82-53-359-0333

- INTELLECTUAL PROPERTY

All intellectual property, owned by or which is otherwise the property of Rime Lite or its respective suppliers relating to **UNION**, including but not limited to, accessories, parts, or software, is proprietary to Rime Lite. No title to or ownership in the intellectual property is transferred to you. All applicable rights of the intellectual Property shall remain with Rime Lite and its suppliers.



Safety Instructions

*Please read and understand all the instructions to avoid injury to yourself and/or damage to **UNION***

- Do not expose to extreme temperatures (above 140°F or below -4°F, or above 60°C or below -20°C).
- Do not expose to moisture. Do not use **UNION** near water.
- Do not let any foreign matter spill into **UNION**
- Do not expose to chemicals such as benzene and thinners. Do not use liquid or aerosol cleaners. Clean with a soft damp cloth only.
- Do not expose to direct sunlight or heat sources for a prolonged period.
- Do not try to disassemble and/or repair **UNION** yourself.
- Do not subject **UNION** to severe impact,
- Do not place heavy objects on **UNION**.
- Do not subject **UNION** to excessive pressure.
- Do not touch **UNION** with wet hands
- Do not store in dusty areas.

Please be aware that Rime Lite claims no responsibility for damage from data loss due to breakdown, repair, or other causes.

Unpacking

Your package contains the following items.



MIRA



Power Cable



Synchro Cable



Halogen

- You can obtain the following accessories for **UNION** from your local dealer:

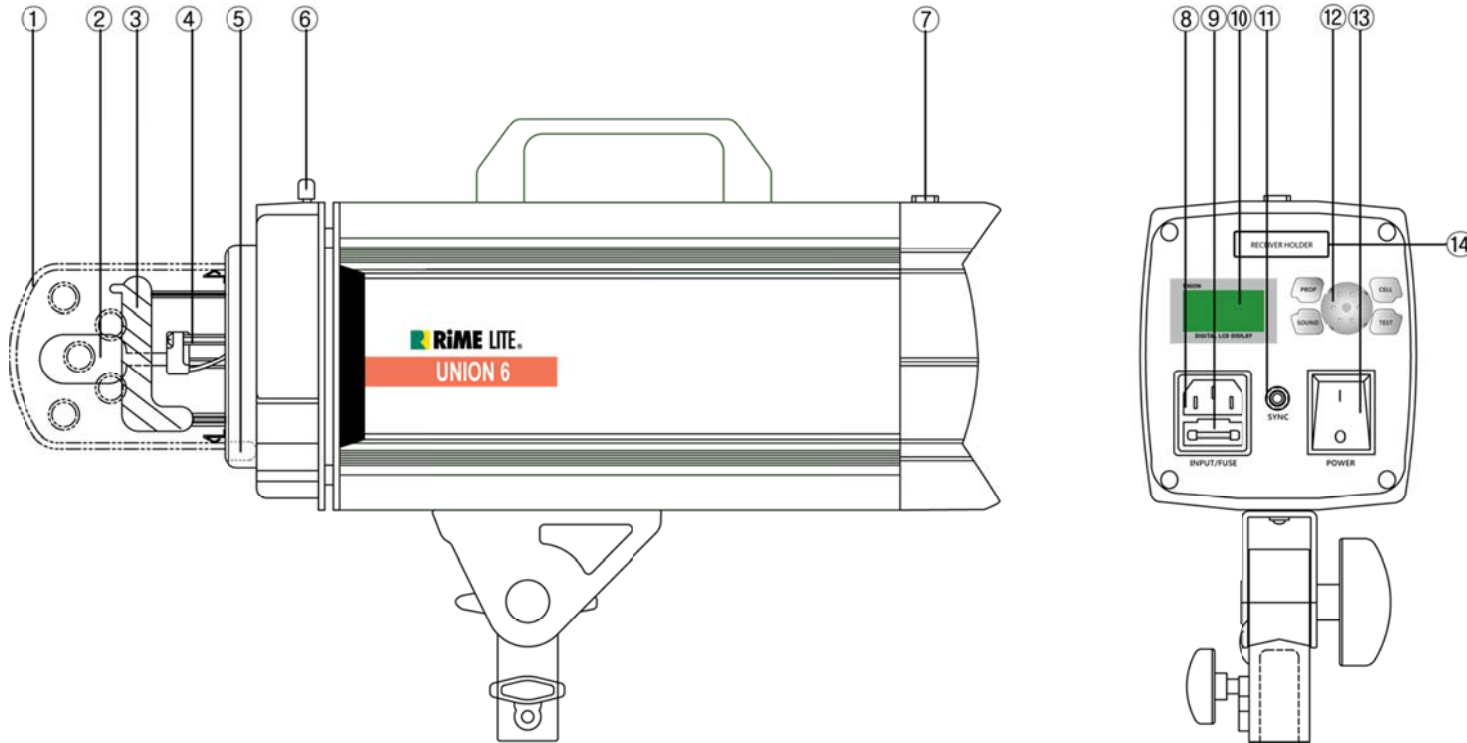


Trigger
SWING



Receiver
SWING

Layout



Cursor	Description	Cursor	Description
①	Protecting Glass	⑨	Modeling Lamp Fuse
②	Modeling Lamp	⑩	LCD Display
③	Flash Tube	⑪	Synchro Socket
④	Modeling Base	⑫	Digital Encoder
⑤	Umbrella Holder	⑬	Power Switch
⑥	Locking Holder	⑭	Receiver Holder
⑦	Photocell		
⑧	Main Inlet		

SPECIFICATION

m, ISO 100, 1/125 sec, RST165H

MODEL	UNION 2	UNION 4	UNION 6
Power Intensity	200w/s	400w/s	600w/s
Power Supply	100 ~ 120V (50 ~ 60Hz) 190 ~ 250V (50 ~ 60Hz)		
F-stop(Max.)	22.8	32.8	45.3
Variable Range of Flash	4.5 f-stops		
Color Temperature (+/-250)	5550		
Flash Duration(0.5t) Max.	1/2250	1/2050	1/1800
Recycling Time, Min. ~ Max.(230V)	0.1~1.6s	0.1~1.6s	0.1~1.8s
Recycling Time, Min. ~ Max.(110V)	0.1~1.9s	0.1~2.0s	0.1~2.1s
Voltage Stabilization	Max. +/-0.5% Stability for digital image		
Power Control	Digital Encoder		
Halogen Lamp	Halogen 150w, 300w, 650w based GX 6.35, Pin Type		
Halogen Lamp Mode	Full, Proportional, User Defined, Off		
Charge Ready Beep	Yes		
SYNC Voltage, Protect System for Camera	DC 12V, Yes		
Cooling Fan	Yes		
Protecting System Against Overheat	Microprocessor control Yes		
Fuse	Yes		
Protecting Glass For Head	Yes		
Dimension(LxWxH, mm)	390x120x115	390x120x115	390x120x115
Weight(kg)	2.9	3	3.3



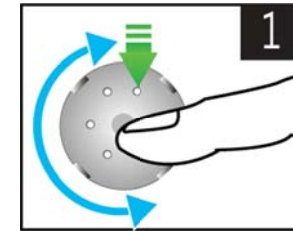
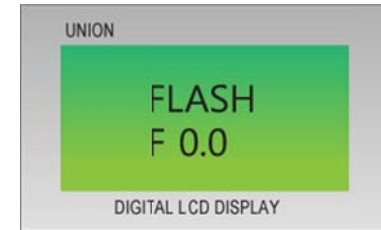
Operation Instruction for UNION

- A. Insert a power cord into the main Inlet.
- B. Turn the power switch ON
- C. Before switching off, better to set all buttons & indicators to "Minimum" or "OFF"

Adjusting Flash Output

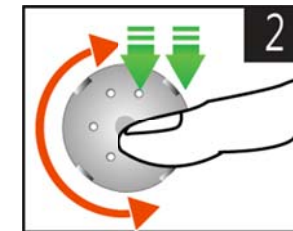
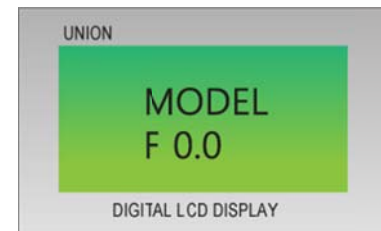
1. How to adjust Flash Power Output

- Press Digital Volume once, then you can see below image.
- Turn the Digital Volume right or left if you want to control the output.



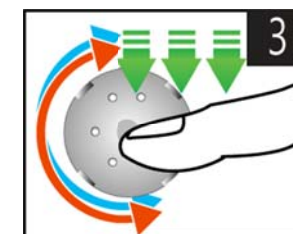
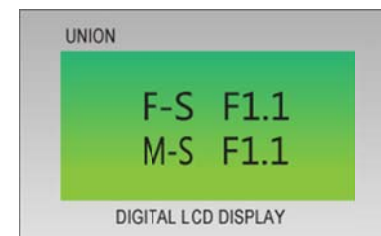
2. How to adjust Modeling Light

- Press Digital Volume twice, then you can see below image.
- Turn the Digital Volume right or left if you want to control the modeling Light.



3. How to adjust Flash & Modeling Light

- Press Digital Volume three times, then you can see below image.
- Turn the Digital Volume right or left if you want to control the flash and modeling Light.



Operation Instruction for SWING

Before you use SWING with UNION, please power off strobes. You will experience the great performance of both strobe and SWING.

Transmitter

- Join the transmitter to a digital camera

Receiver

- Join the receiver to a strobe.



Notice) when a user set the channel of SWING, the user should adjust the same number of both transmitter and receiver.

It can set the maximum 6 strobes per a transmitter under the same channel

If a user uses over 6 strobes under the same channel, the effective distance from both a transmitter and a receiver can be shorter.

TEST Button

The LED lamp is flickered when a user presses "TEST" button.

Check list when troubling

1. Cannot turn on the power.

- 1) Please check the power switch on.
- 2) Please check the power cable inserted correctly.

2. Unit does not flash.

- 1) Please check the flash tube inserted correctly.
- 2) Please check the trigger coil contacted with the flash tube legs.
- 3) Please change the flash tube.

3. Unit does not recharge.

- 1) Please check the power cable inserted correctly.
- 2) Please check the unit voltage supplies it correct.
- 3) Please change the fuse.

4. Ready "beep" does not sound.

- 1) Please check the "SOUND" button pressed.
- 2) Please make sure the unit fully recharging.

5. Unit does not fire from sync connection or transmitter or remote control.

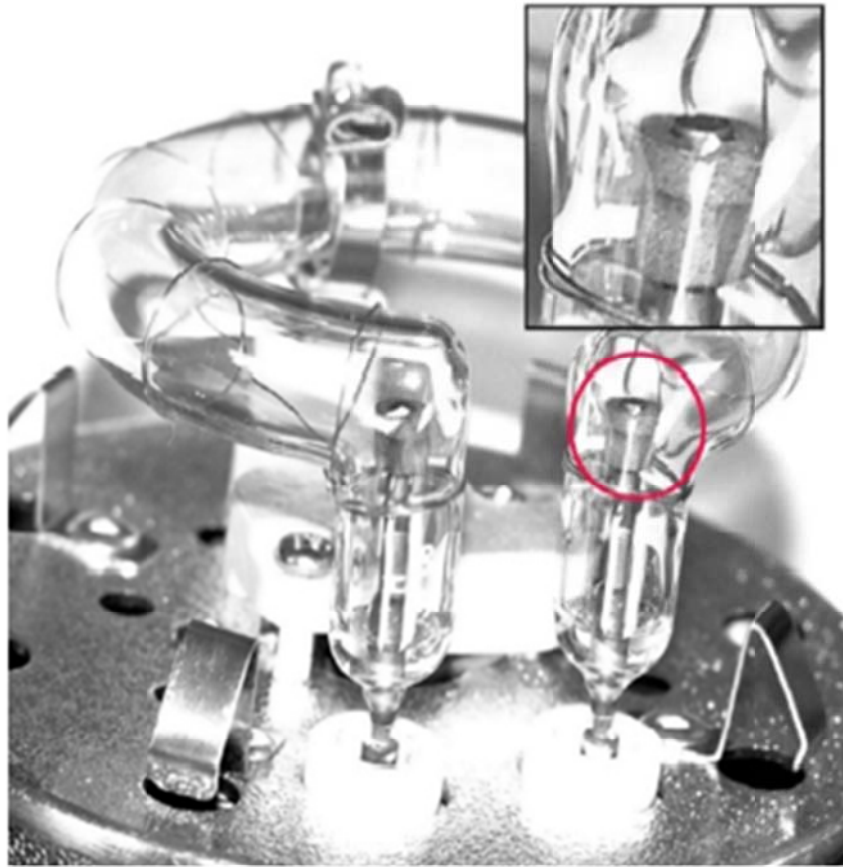
- 1) Check the sync cord or receiver is inserted correctly.
- 2) Try another sync cord or wireless system.

6. Unit sounds long "beep" sound.

- 1) It has been started in "overheat" mode and it turns off automatically. After a break for cooling down (from 5 min. to 10 min.), you can turn it on again.

Replacing lamp and flash tube

You must switch off and disconnect the power cord before changing lamp or flash tube!!



Right Flash Tube

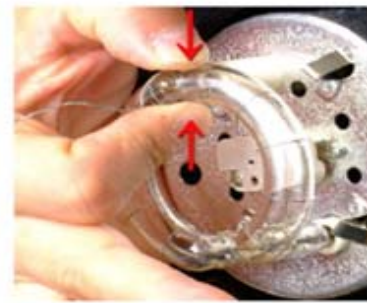


Broken Flash Tube

REMOVE



ASSEMBLE



Accessories

STANDARD REFLECTOR



Shadow : Depth Shadow
 Character : More soft Gradation & Dynamic Range,
 Focus on Center
 Effect : To express subject in detail
 Option : Honeycomb Grid 10" / 20" / 30" / 40"
 Umbrella, Barn Door, Color Filter



SNOOT REFLECTOR



Shadow : Strong shadow
 Character : Strong Contrast in Center
 Effect : Detailed Expression of Subject
 Option : Hood Honeycomb Grid 10" / 20" / 30"



STANDARD REFLECTOR(Hard)



Shadow : Depth Shadow
 Character : Soft Gradation & Dynamic Range,
 Focus on Center
 Effect : Increasing 1.5~2 steps of exposure
 Available for More Detailed Expression
 Option : Honeycomb Grid 10" / 20" / 30" / 40"
 Umbrella, Barn Door, Color Filter



BACK REFLECTOR



Diameter : 330mm
 Shadow : Using as Background
 Character : Soft Gradation & Dynamic Range
 Effect : Available for detailed expression



MEDIUM REFLECTOR



Shadow : Soft Shadow
 Character : Soft Gradation & Dynamic Range,
 Wide Spread of Center
 Effect : Wide and Uniform Light.
 Detailed Expression of Subject
 Option : Honeycomb Grid 10" / 20" / 30" / 40"
 Umbrella, Barn Door, Color Filter



NARROW REFLECTOR



Diameter : 285mm
 Shadow : Depth Shadow
 Character : Very clear gradation
 Effect : Very detailed expression of Subject



BEAM REFLECTOR



Diameter : 330mm
 Shadow : Very soft shadow
 Character : Softer Gradation & Dynamic Range,
 Wide spread on Center
 Effect : Uniform Exposure of giving Very Wide Light
 Option : Honeycomb Grid 10" / 20" / 30" / 40"
 Umbrella, Barn Door, Color Filter



WIDE REFLECTOR



Diameter : 430mm
 Shadow : Very Soft Shadow
 Character : Softer Gradation & Dynamic Range,
 Wide spread on Center
 Effect : Equal Exposure of giving Very Wide Light



UNION is free of defects in material and workmanship for a period of twenty four (24) months from the original date of purchase by the consumer.

If during the period of warranty this product proves defective under normal use and service, you should return the product to the retailer from whom it was originally purchased, or to any Rime Lite authorized dealer or authorized service center, if outside the time limit for returns imposed by the retailer.



- Warranty Conditions

1. The warranty is only valid presentation of the proof purchase consisting of original invoice or sales slip confirmation, indicating the date of purchase, retailer's name, model and serial number. Rime Lite reserve the right to refuse warranty service if this information has been removed or changed after the original purchased of the product from the retailer.
2. Rime Lite's sole obligations are to the repair of the defective part, or at its discretion, replacement of the product (service exchange unit)
3. Warranty repair must be carried out by an authorized Rime Lite dealer/ service center. No reimbursement will be made for repairs carried out by non-Rime Lite, and warranty coverage will not be valid for any repairs or damage caused by such repairs.
4. Repair or replacement under the term of this warranty does not give right to extension to or a new starting of the period of warranty. Repair or direct replacement under the terms of this warranty may be fulfilled with functionally equivalent service exchange units.
5. The warranty is not applicable in cases other than defects in material and workmanship. The warranty does not cover the following:
 - A. Periodic checks, maintenance, repair, and replacement of parts due to normal wear and tear.
 - B. Abuse or misuse, including but not solely limited to the failure to use this product for its normal purpose in accordance with Rime Lite's instructions for usage and maintenance.
 - C. Failure of or damage to the product arising from incorrect installation or use inconsistent with technical or safety standards, or failure to comply with product manual instructions.